

[www.hishose.com.au](http://www.hishose.com.au)



email: [admin@hishose.com.au](mailto:admin@hishose.com.au)

**INDUSTRIAL**

**CATALOGUE**

**H.I.S. HOSE**

Proprietary Limited

# VALVES



Quality  
ISO 9001

SAI GLOBAL  
CERT NO QEC22270

**Industrial • Hydraulics • Ducting • Pneumatics**

## WESTERN BRANCH

28 Spencer Street  
Sunshine West Vic 3020  
Tel: (03) 8311 7400  
Fax: (03) 9311 2322

## EASTERN BRANCH

73-81 Bessemer Drive  
Dandenong South Vic 3175  
Tel: (03) 9794 9299  
Fax: (03) 9794 9992

## NORTHERN BRANCH

169-171 Northbourne Rd  
Campbellfield Vic 3061  
Tel: (03) 9305 4600  
Fax: (03) 9305 4231

### Other Catalogues Available:



▶ *IPL Plastic Hose*



▶ *Industrial Rubber Hose*



▶ *Automotive*



▶ *Plastic Tubing & Recoil Hose*



▶ *Flexible Ducting*



▶ *Hose Clamps & Clips*

# Contents:

Ball Valves	4
Gate, Foot & Check Valves	5
Strainers	5
Drain & Bib Cocks	6
Needle, Relief & Stop-Flo Valves	6
Butterfly Valves	7
Rotary Joints	7
Swivel Joints	8
Plastic Valves	9
Stainless Steel Valves	10
Vented Valves	11
Piloted Valves	12 & 13
Wash Down & Spray Nozzles	14
Spray Guns & Equipment	15



**THREE WAY BORE VALVE  
(BOTTOM ENTRY) STANDARD**



**THREE WAY BORE VALVE  
(SIDE ENTRY)**

### BALL VALVE – FULL BORE

*Valve Body:* Hot-pressed brass alloy. *Ball:* Hard chrome-plated, hot-pressed brass alloy. *Seal:* Teflon (PTFE)

*Applications:* Suitable for gas, water, saturated steam, compressed air, oil, weak alkaline solutions and acids. *Temp. Range:* -10°C to +200°C

Product No.	BSP Female	Max WP psi	Product No.	BSP Female	Max WP psi
<b>1810/6</b>	1/4"	435	<b>1810/40</b>	1.1/2"	363
<b>1810/10</b>	3/8"	435	<b>1810/50</b>	2"	363
<b>1810/12</b>	1/2"	435	<b>1800/63</b>	2.1/2"	265
<b>1810/20</b>	3/4"	435	<b>1800/80</b>	3"	235
<b>1810/25</b>	1"	435			
<b>1810/32</b>	1.1/4"	363			

### BALL VALVE – REDUCED BORE

*Valve Body:* Hot-pressed brass alloy. *Ball:* Hard chrome-plated, hot-pressed brass alloy. *Seal:* Teflon (PTFE). *Stem:* Hot pressed brass alloy. *O-Ring:* Teflon (PTFE)

*Applications:* Suitable for industrial, pneumatic and domestic installations. Hot water, steam, gasoline, fuel, oils, diesel fuel, kerosene, gas, acids, compressed air etc.

*Temp. Range:* -30°C to +180°C

Product No.	BSP Female/Male	Max WP psi
<b>1811/06</b>	1/4"	250
<b>1811/10</b>	3/8"	250
<b>1811/12</b>	1/2"	250
<b>1811/20</b>	3/4"	250
<b>1811/25</b>	1"	250
<b>1811/32</b>	1.1/4"	250

### BALL VALVE – BUTTERFLY HANDLE

*Valve Body:* Hot-pressed brass alloy. *Ball:* Hard chrome-plated, hot-pressed brass alloy. *Seal:* Teflon (PTFE)

*Applications:* Suitable for gas, water, saturated steam, compressed air, oil, weak alkaline solutions and acids. *Temp. Range:* -10°C to +200°C

Product No.	BSPT Female	Max WP psi	Product No.	BSPT Female	Max WP psi
<b>1820/6</b>	1/4"	600	<b>1820/20</b>	3/4"	560
<b>1820/10</b>	3/8"	600	<b>1820/25</b>	1"	560
<b>1820/12</b>	1/2"	600			

### MINI-BALL VALVES – FEMALE/FEMALE THREAD

*Materials:* Brass bar material, nickel plated.

Product No.	BSP	Max WP psi	Product No.	BSP	Max WP psi
<b>3830/3</b>	1/8"	210	<b>3830/12</b>	1/2"	210
<b>3830/6</b>	1/4"	210			
<b>3830/10</b>	3/8"	210			

### MINI-BALL VALVES – FEMALE/MALE THREAD

*Materials:* Brass bar material, nickel plated.

Product No.	BSP	Max WP psi	Product No.	BSP	Max WP psi
<b>3831/3</b>	1/8"	210	<b>3831/12</b>	1/2"	210
<b>3831/6</b>	1/4"	210			
<b>3831/10</b>	3/8"	210			

### 3 WAY BALL VALVES WITH L- OR T-PORTS

*Valve Body:* Hot-pressed brass alloy. *Ball:* Hard chrome-plated, hot-pressed brass alloy. *Seal:* Teflon (PTFE). *Stem:* Hot-pressed brass alloy. *O-Ring:* Teflon (PTFE)

*Applications:* Suitable for industrial, pneumatic and domestic installations. Hot water, steam, gasoline, fuel, oils, diesel fuel, kerosene, gas, acids, compressed air, etc.

*Temp. Range:* -30°C to +180°C

Valves with L-Ports			Valves with T-Ports		
Product No.	BSP Female	Max WP psi	Product No.	BSP Female	Max WP psi
<b>3210/6</b>	1/4"	600	<b>3110/6</b>	1/4"	600
<b>3210/10</b>	3/8"	600	<b>3110/10</b>	3/8"	600
<b>3210/12</b>	1/2"	600	<b>3110/12</b>	1/2"	600
<b>3210/20</b>	3/4"	560	<b>3110/20</b>	3/4"	560
<b>3210/25</b>	1"	560	<b>3110/25</b>	1"	560
<b>3210/32</b>	1.1/4"	450	<b>3110/32</b>	1.1/4"	450
<b>3210/40</b>	1.1/2"	450	<b>3110/40</b>	1.1/2"	450
<b>3210/50</b>	2"	350	<b>3110/50</b>	2"	350
<b>3210/80</b>	3"	235	<b>3110/80</b>	3"	235

ADD 'SE' TO ABOVE PRODUCT NOS. (i.e. 3210/25SE)

## BRASS GATE VALVES

**Material:** Hot-pressed brass. **Size Range:** 1/2" to 4".

This conventional design gate valve offers high quality at an economical price.

Full flow on/off control.

**Applications:** Suitable for water, oil and gas.

**Working Pressure:** 150psi (1034kpa).

Product No.	BSPT Female	Product No.	BSPT Female
<b>221-10</b>	3/8"	<b>221-40</b>	1.1/2"
<b>221-12</b>	1/2"	<b>221-50</b>	2"
<b>221-20</b>	3/4"	<b>221-63</b>	2.1/2"
<b>221-25</b>	1"	<b>221-80</b>	3"
<b>221-32</b>	1.1/4"	<b>221-100</b>	4"

## BRASS GLOBE VALVES

**Material:** Cast Bronze. **Size Range:** 1/2" to 4".

This conventional design gate valve offers high quality. Full flow on/off control is

**Applications:** Suitable for water, oil and gas

**Working Pressure:** 200psi (1378kpa).

For saturated steam service at 100psi (689kpa).

Product No.	BSPT Female	Product No.	BSPT Female
<b>323-10</b>	3/8"	<b>323-40</b>	1.1/2"
<b>323-12</b>	1/2"	<b>323-50</b>	2"
<b>323-20</b>	3/4"		
<b>323-25</b>	1"		
<b>323-32</b>	1.1/4"		

## BRASS FOOT VALVES / STRAINER

**Valve Body:** Hot-pressed brass alloy. **Seat:** NBR synthetic rubber. **Clacker type seal**

**Applications:** Suitable for pumping water, various oils, etc.

**Working Pressure:** 150psi (1034kpa)

Product No.	Thread inches	Product No.	Thread inches
<b>230-12</b>	1/2"	<b>230-50</b>	2
<b>230-20</b>	3/4"	<b>230-63</b>	2.1/2
<b>230-25</b>	1"	<b>230-80</b>	3
<b>230-32</b>	1.1/4"	<b>230-100</b>	4
<b>230-40</b>	1.1/2"		

## BRASS SPRING LOADED CHECK VALVES

**Valve Body:** Hot-pressed brass alloy. **Stem seat:** Nylon plastic.

**Seat:** NBR synthetic rubber. **Spring:** Stainless steel

**Applications:** Suitable for industrial, pneumatic and domestic installations. Hot water, oxygenated water, sodium water, various oils, compressed air. It can be fitted in horizontal, vertical or oblique positions.

**Working Pressure:** 150psi (1034kpa)

Product No.	BSP Female	Product No.	BSP Female
<b>229S-10</b>	3/8"	<b>229S/32</b>	1.1/4"
<b>229S-12</b>	1/2"	<b>229S/40</b>	1.1/2"
<b>229S-20</b>	3/4"	<b>229S/50</b>	2"
<b>229S-25</b>	1"		

## BRASS SWING CHECK VALVE

**Valve Body:** Hot-pressed brass alloy. **Seat:** NBR synthetic rubber. **Clacker type seal**

**Applications:** Suitable for pumping water, various oils, etc.

**Working Pressure:** 200psi (1378kpa)

Product No.	BSP Female	Product No.	BSP Female
<b>326-10</b>	3/8"	<b>326/32</b>	1.1/4"
<b>326-12</b>	1/2"	<b>326/40</b>	1.1/2"
<b>326-20</b>	3/4"	<b>326/50</b>	2"
<b>326-25</b>	1"		

## BRASS LINE STRAINER

**Valve Body:** Cast bronze with stainless steel element.

**Applications:** Suitable for water, oil and gas and saturated steam.

**Working Pressure:** 200psi (1378kpa) for water, oil and gas. 100psi (689kpa) for saturated steam.

Product No.	BSP Female	Product No.	BSP Female
<b>328-12</b>	1/2"	<b>328/32</b>	1.1/4"
<b>328-20</b>	3/4"	<b>328/40</b>	1.1/2"
<b>328-25</b>	1"	<b>328/50</b>	2"
		<b>328/63</b>	2.1/2"



VALVES

VALVES / GATE /  
CHECK & STRAINERS





## MISCELLANEOUS VALVES & ROTARY JOINTS

### DRAIN COCK

Product No.	BSPT Male
30-1/8	1/8"
30-1/4	1/4"
30-3/8	3/8"
30-1/2	1/2"

### DRAIN COCK

Product No.	BSPT Male
DT3-1/8	1/8"
DT3-1/4	1/4"
DT3-3/8	3/8"

### RELIEF VALVE

Product No.	BSPT Male
TF206-1/4	1/4"
TF206-3/8	3/8"
TF206-1/2	1/2"

Factory set at 1050 Kpa

### WATER TAPS STANDARD BIB COCK

Material: Hot-pressed brass, matte chromium plated.

Product No.	Nom. Size	Outlet BSP Male
HTAP15	1/2"	3/4"
HTAP20	3/4"	1"

### BALL BIB COCKS

Materials: Body: Hot-pressed brass alloy. Handle: Aluminium. Ball: Hard chrome-plated hot-pressed brass alloy. Seal: Teflon (PTFE). Stem: Hot-pressed brass alloy. O Ring: Teflon (PTFE)

Applications: Suitable for industrial, pneumatic and domestic installations. Hot water, steam, gasoline, fuel, oils, diesel fuel, kerosene, gas, acids, compressed air.

Temp. Range: -30°C to +180°C.

Product No.	Inlet BSP Male
4904/12	1/2"
4904/20	3/4"
4904/25	1"

### NEEDLE VALVE

Product No.	BSPT Female
NV104-1/8	1/8"
NV104-1/4	1/4"
NV104-3/8	3/8"

### NEEDLE VALVE

Product No.	BSPT Male
NV105-1/8	1/8"
NV105-1/4	1/4"

### STOP-FLO VALVES

Safety is important. This product is designed to prevent hose whip - Not suitable as a check valve. Jamec-Pem has introduced this Australian designed and made Stop Flo Valve to minimise the damage in situations where an air hose could fail or become disconnected under pressure.

A properly selected Stop Flo Valve would almost instantly cut off the rush of air due to the hose failure. Turning off the air supply and reconnecting, repairing or replacing the damaged hose will allow the Stop Flo Valve to reset.

Product No.		
PEM08-1700	808	1/2" BSP Female
PEM08-1710	812	3/4" BSP Female
PEM08-1720	816	1" BSP Female
PEM08-1730	824	1.1/2" BSP Female
PEM08-1740	832	2" BSP Female

## BUTTERFLY VALVES

Cast iron butterfly valve wafer type. To suit B. S. Table E flanges.  
Disk: Chrome plated ductile iron with stainless steel stem and pins.  
Seats: Nitrile rubber.  
*Applications:* Water, sludge, oil and various liquids.  
*Working Pressure:* 150psi (1034kpa)  
*Sizes:* 2" to 8".

Product No:	Size
<b>50-445NL</b>	2"
<b>65-445NL</b>	2.1/2"
<b>80-445NL</b>	3"
<b>100-445NL</b>	4"
<b>150-445NL</b>	6"
<b>200-445NL</b>	8"

Cast iron butterfly valve wafer type. To suit B. S. Table E flanges.  
Disk T316 stainless steel up to and including 6". 8" and above T304 stainless steel.  
Seats: EPDM and nitrile rubber.  
*Applications:* Water, sludge, some chemicals and various liquids.  
*Working Pressure:* 150psi (1034kpa)  
*Sizes:* 2" to 12".

Product No:	Size
<b>50-447EL</b>	2"
<b>65-447EL</b>	2.1/2"
<b>80-447EL</b>	3"
<b>100-447EL</b>	4"
<b>150-447EL</b>	6"
<b>200-447EL</b>	8"
<b>250-447EL</b>	10"
<b>300-447EL</b>	12"



# VALVES

## ROTARY JOINTS

**Precision rotating connections for water, steam, air, hydraulic, vacuum, coolant and hot oil service.**

Barco rotary joints are engineered for either general applications or special requirements. The products are grouped accordingly to guide selection based upon the characteristics of the machinery systems in which they are to be used.

### TYPE C GROUP ROTARY JOINTS

These rotary joints are designed to meet the requirements of a wide range of systems as original equipment or replacement parts. Both syphon (circulating service) and single flow requirements can be met. The Type 'Super G' rotary joint is designed for the tough corrugated board processing applications. It has proven to be a reliable performer in difficult service conditions where other joints have failed. Joint sizes from 1/2 inch to 3 inches are available for all types, including ferrous or bronze materials.

### ROTATING SYPHON JOINTS

These joints and the rotating syphon assemblies are designed principally for paper-making machinery and other applications needing condensate evacuation, but can be used in other applications requiring internal syphoning. Joint sizes from 3/4 inch to 4 inches are available in this product group.

### WATER ROTARY JOINTS

This series of joints is designed for water and brine service in cooling roll, calendar and super calendar applications - commonly used for printing presses, as well as paper, plastics and metal foil processing. Mono and Duo-flow types are available for joint sizes from 3/8 inch to 4 inches within this product group. Flanged and threaded end styles are also available.

### AIR, HYDRAULIC AND COOLANT ROTARY JOINTS

The Type 'E-1' and 'D' rotary joints in this category are for specific applications as noted in the product description.



**BUTTERFLY VALVES & ROTARY JOINTS**



### FS5900 SERIES SWIVEL JOINTS

#### FOR 5000PSI (34.3 MPA) SERVICE

The new Aeroquip FS5900 Series swivel joint is an all new design for 5000psi (34.3 MPa) operating pressure service made possible by advanced design needle bearings and seals. In addition to high pressures the FS5900 series provides full fluid flow with minimal pressure drop.

Field repair of the FS5900 Series is easy with conveniently packaged repair kits. Kits are available to repair seals, bearings or both. Thread NPT Male/Female.

Product No.	Size "
<b>FS59004-0404-01</b>	1/4
<b>FS59004-0606-75</b>	3/8
<b>FS59004-0808-75</b>	1/2
<b>FS59004-1212-75</b>	3/4
<b>FS59004-1616-75</b>	1



### BD5500 SERIES SWIVEL JOINTS

#### 3000PSI (20.6 MPA) LOW TORQUE FOR HYDRAULIC, PNEUMATIC AND OTHER APPLICATIONS

The Aeroquip BD5500 series swivel joint is ideal for use wherever hose moves, bends or twists. It permits the use of less hose in flexing application, producing neater, space saving installations, resulting in lower maintenance cost. Thread NPT Male/Female.

Product No. with NPSM Swivel Nut	Size "
<b>BD55000-0404-01</b>	1/4"
<b>BD55000-0606-01</b>	3/8"
<b>BD55000-0808-01</b>	1/2"
<b>BD55000-1212-01</b>	3/4"
<b>BD55000-1616-01</b>	1"
<b>BD55000-2020-01</b>	1-1/4"
<b>BD55000-2424-01</b>	1-1/2"



### TEMA SLOW ROTATION SWIVEL JOINT

The TEMA Swivel Joint has very low torque even at maximum working pressure, this is due to its uniquely designed balanced spindle seal.

The TEMA Swivel Joint is dynamically tested at pressure of 0-25 MPa (3630 Psi) under rotating conditions backwards and forwards millions of times.

It has relatively small dimensions and can be obtained in various formats.

The Swivel Joint body is made of brass, the rotating spindle is in steel, can also be supplied in stainless steel. The primary seal is Nitrile rubber.

The BSP thread is suitable for standard hydraulic connection and adapters.

The primary field of application is to eliminate the risk of the hose being subjected to excess torsion and twisting. It increases the security and durability of hose and fittings. The TEMA Swivel Joint is suitable for oil and other medias, for example, hot and cold water (spindle in stainless steel), air etc.

Maximum working pressure: 250 bar

Maximum temperature: -40°C to + 90°C

Maximum rotation: 60 rpm.

Product No.	<b>TEMA250</b>	1/4" Brass Swivel	Body thread 3/8"
Product No.	<b>TEMA250RF</b>	1/4" Stainless Steel Swivel	Body thread 3/8"

Other sizes available on request.





## SINGLE UNION POLYPROPYLENE BALL VALVE

### FEATURES

- Precision moulded in glass reinforced polypropylene, for strength and chemical resistance.
- PTFE seats for smooth operation and proper sealing characteristics.
- EPDM O-rings to handle most fertilisers and many chemicals. FKM (viton type) available.
- Double O-rings in stem area for extra sealing protection.
- Interlocking body and end plate to allow easy thread connection when installing valves.
- Maximum operating pressure 100 PSU at 70 °F.



Product No.	Description	Max PSI	Pipe Size	Opening through Ball
<b>UV050FP</b>	1/2" Single Union Poly Valve	100	1/2"	3/4"
<b>UV075FP</b>	3/4" Single Union Poly Valve	100	3/4"	3/4"
<b>UV100FP</b>	1" Single Union Poly Valve	100	1"	1"
<b>UV125FP</b>	1.1/4" Single Union Poly Valve	100	1.1/4"	1.1/2"
<b>UV150FP</b>	1.1/2" Single Union Poly Valve	100	1.1/2"	1.1/2"
<b>UV200FP</b>	2" Single Union Poly Valve	100	2"	2"

## FIP PVC VE BALL VALVE, DOUBLE BARREL UNION

### FEATURES

- EPDM seals.
- BSP sockets.

Product No.	Size	Pressure Rating (BAR)
<b>VEFV0375C</b>	3/8"	16
<b>VEFV050C</b>	1/2"	16
<b>VEFV075C</b>	3/4"	16
<b>VEFV100C</b>	1"	16
<b>VEFV125C</b>	1.1/4"	16
<b>VEFV150C</b>	1.1/2"	16
<b>VEFV200C</b>	2"	16
<b>VEFV250C</b>	2.1/2"	10
<b>VEFV300C</b>	3"	10
<b>VEFV400C</b>	4"	10



## PVC COMPACT BALL VALVE

### FEATURES

- FI thread.
- EDPM seat.

Product No.	Size
<b>COMPACT12</b>	1/2" Female Iron Thread
<b>COMPACT20</b>	3/4" Female Iron Thread
<b>COMPACT25</b>	1" Female Iron Thread
<b>COMPACT32</b>	1.1/4" Female Iron Thread
<b>COMPACT38</b>	1.1/2" Female Iron Thread
<b>COMPACT50</b>	2" Female Iron Thread



## KTN BALL VALVES

### FEATURES

- FI BSP thread.
- PVC body.
- Teflon seat

Product No.	Size
<b>KTN12</b>	1/2"
<b>KTN20</b>	3/4"
<b>KTN25</b>	1"
<b>KTN32</b>	1.1/4"
<b>KTN38</b>	1.1/2"
<b>KTN50</b>	2"



\* Please note that this is only a sample of the full range available.



# VALVES

## PLASTIC VALVES

### ONE PIECE STAINLESS STEEL BALL VALVE

#### REDUCED BORE

Size: 1/4"-2"  
Rating: 1000psi complete with locking  
Body: T316 stainless steel  
Temperature Range: -60°F to 450°F  
Threads: BSP



Product No.	Size mm	Size inches
300/6	6	1/4
300/10	10	3/8
300/12	12	1/2
300/20	20	3/4
300/25	25	1
300/32	32	1.1/4
300/38	38	1.1/2
300/50	50	2

### TWO PIECE STAINLESS STEEL BALL VALVE

#### FULL BORE

Size: 1/4"-2"  
Rating: 1000psi complete with locking  
Body: T316 stainless steel  
Temperature Range: -60°F to 450°F  
Threads: BSP



Product No.	Size mm	Size inches
301/6	6	1/4
301/10	10	3/8
301/12	12	1/2
301/20	20	3/4
301/25	25	1
301/32	32	1.1/4
301/38	38	1.1/2
301/50	50	2
301/65	65	2.1/2
301/80	80	3

### THREE PIECE STAINLESS STEEL BALL VALVE

#### FULL BORE

Size: 1/4"-2"  
Rating: 1000psi complete with locking  
Body: T316 stainless steel  
Temperature Range: -60°F to 450°F  
Threads: BSP



Product No.	Size mm	Size inches
303/6	6	1/4
303/10	10	3/8
303/12	12	1/2
303/20	20	3/4
303/25	25	1
303/32	32	1.1/4
303/38	38	1.1/2
303/50	50	2
303/65	65	2.1/2
303/80	80	3
303/100	100	4

\* Please note this is a sample range only of available stainless steel valves.

## INDUSTRIAL BALL VALVES

**Working pressure:** 20–40 bar  
depending on model

**Working temperature:** -20° to +80°C

**Constituent materials:**

Body: sand blasted nickel-plated brass

Ball: polished brass

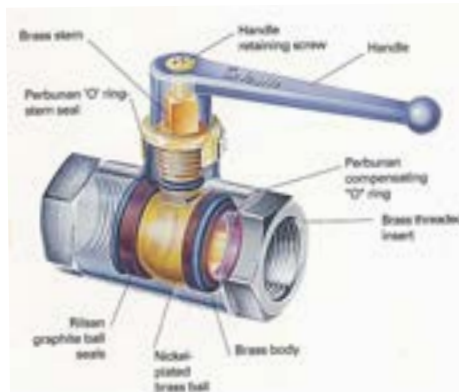
Stem: brass

Retaining nut: brass

Ball seal: graphic impregnated rilsan

Stem seal: nitrile

Compensating 'O' rings: nitrile



**Maximum tightening torques of ball valves, standard range:**

G1/8 0,10 to 0,20

G1/4 0,10 to 0,20

G3/8 0,15 to 0,25

G1/2 0,20 to 0,35

G3/4 0,50 to 0,70

G1 0,50 to 0,70

G1.1/4 0,40 to 0,60

G1.1/2 0,80 to 1,20

G2 0,80 to 1,20

### DOUBLE FEMALE PANEL MOUNTED

**0446.04.10** G1/8

**0446.07.13** G1/4

**0446.10.17** G3/8

**0446.13.21** G1/2



### DOUBLE FEMALE WITH VENT

**0439.04.10** G1/8

**0439.07.13** G1/4

**0439.10.17** G3/8

**0439.13.21** G1/2

**0439.18.27** G3/4

**0439.23.34** G1



### DOUBLE FEMALE VENTED BSPP VALVE

**0469.04.10** G1/8

**0469.07.13** G1/4

**0469.10.17** G3/8

**0469.13.21** G1/2

**0469.18.27** G3/4

**0469.23.34** G1



### DOUBLE FEMALE

**6402.04.10** G1/8

**6402.07.13** G1/4

**6402.10.17** G3/8

**6402.13.21** G1/2

**6402.18.27** G3/4

**6402.23.34** G1



\* Please note this is a sample range only of available vented valves.

## PILOTED VALVES



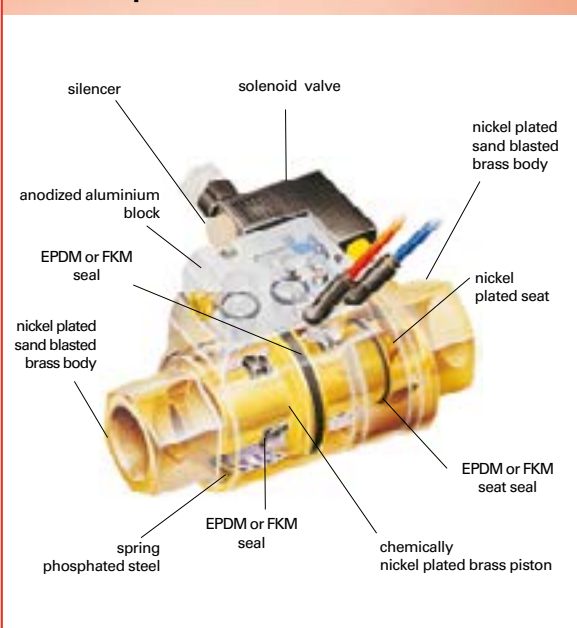
Designed with a view to overcoming the limitations of traditional actuators, the Legris axial valve offers the functions of a valve fitted with an actuator. A pneumatic automation device is fitted directly into the valve.

Its operation is not affected by the up/downstream pressures of the transported fluids, which guarantees the user total safety and a vastly simplified choice.

### Principal advantages:

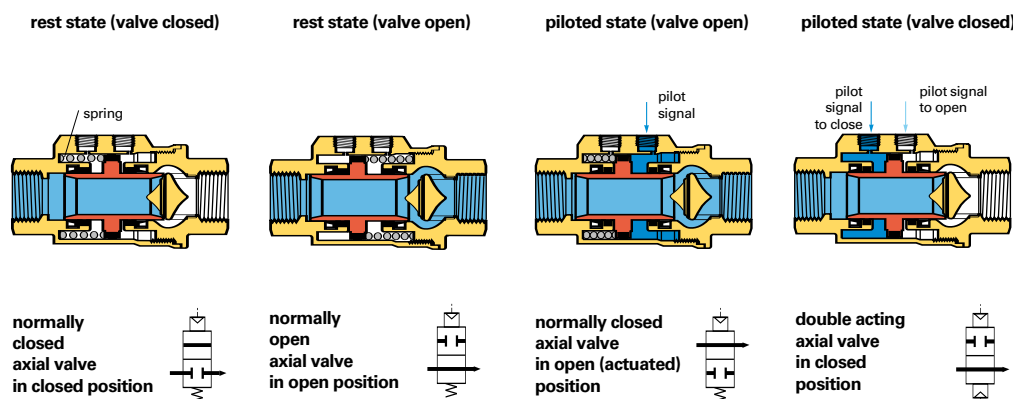
- Compactness: the axial valve is extremely compact and requires up to 50% less space than an actuated valve.
- Costs less than an actuated valve: a single unit which controls the following two functions at the same time opening/closing of circuit and actuation of this function.
- High performance: full flow, compatible with numerous industrial fluids
- Straightforward reliable installation: ready to fit.

### technical specifications

	<b>transported fluid</b>	- all fluids compatible with : • FKM : water, air, oils, greases... • EPDM : hot water, air, steam...
	<b>maximum working pressure</b>	10 bar
	<b>maximum temperature</b>	with FKM seal + 135° C with EPDM seal + 120° C
	<b>minimum temperature</b>	- 20°C
	<b>vacuum capability</b>	740 mm Hg (97,4% vacuum).
	<b>pilot fluid</b>	filtered compressed air
	<b>pilot pressure</b>	NC and NO : 4,2 to 8 bar double acting : 3 to 8 bar

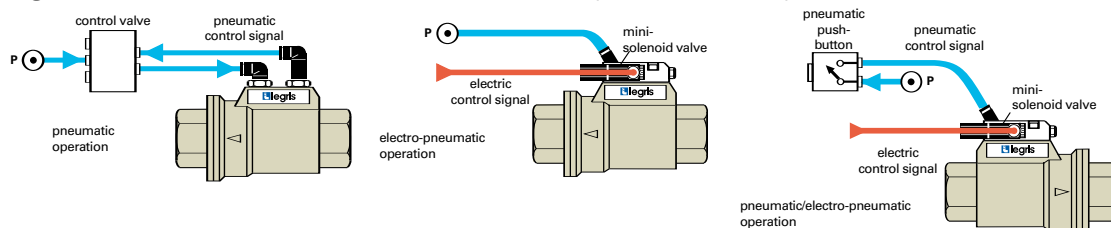
## OPERATION

Depending upon the operational requirement, air is passed into the actuation chamber, as shown below, in order to open or close the valve.



## WHICH CONTROL METHOD?

The Legris axial valve offers three different control methods dependant on the requirements of the installation:



### PNEUMATIC CONTROL

example : 4222 axial valve, double acting

- on-site control.
- for repetitive on/off cycles.
- remote control in case of difficulty of access to a machine.

### ELECTRO-PNEUMATIC CONTROL

example :  
4202 axial valve, normally closed  
+ 4298 mini-solenoid valve and subbase

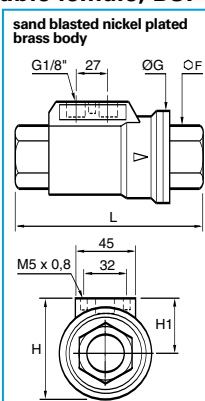
- for industrial automation requiring remote control.

### PNEUMATIC/ELECTRO-PNEUMATIC DUAL CONTROL

example :  
4212 axial valve, normally open  
+ 4298 mini-solenoid valve and subbase  
+ 4299 switch

- dual control structure
- for increased safety : prevents all localized operating errors.

## 4202 normally closed, double female, BSP parallel



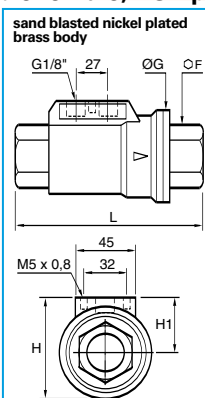
C	DN	FKM seal	F	G	H	H1	L	kg
G3/8	10	4202 10 17 20	22	46	54	31	98	0,814
G1/2	15	4202 15 21 20	27	52	60	35	112	1,085
G3/4	20	4202 20 27 20	33	64	70	38	135	1,634
G1"	25	4202 25 34 20	41	69	76	41,5	143	2,024
G1"1/4	32	4202 32 42 20*	50	86	91	48	165	3,301
G1"1/2	40	4202 40 49 20*	60	96	102	54	180	4,180
G2"	50	4202 50 48 20*	75	109	115	60,5	207	6,360

C	DN	EPDM seal	F	G	H	H1	L	kg
G3/8	10	4202 10 17 30	22	46	54	31	98	0,814
G1/2	15	4202 15 21 30	27	52	60	35	112	1,085
G3/4	20	4202 20 27 30	33	64	70	38	135	1,634
G1"	25	4202 25 34 30	41	69	76	41,5	143	2,024
G1"1/4	32	4202 32 42 30*	50	86	91	48	165	3,301
G1"1/2	40	4202 40 49 30*	60	96	102	54	180	4,180
G2"	50	4202 50 48 30*	75	109	115	60,5	207	6,360

Pilot port : 1/8" BSP parallel  
Complete with M5 silencer

## 4212 normally open, double female, BSP parallel



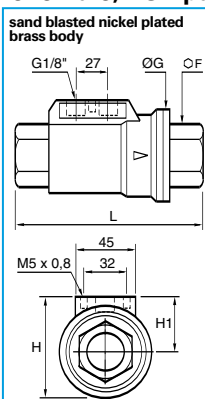
C	DN	FKM seal	F	G	H	H1	L	kg
G3/8	10	4212 10 17 20	22	46	54	31	98	0,814
G1/2	15	4212 15 21 20	27	52	60	35	112	1,085
G3/4	20	4212 20 27 20	33	64	70	38	135	1,634
G1"	25	4212 25 34 20	41	69	76	41,5	143	2,024
G1"1/4	32	4212 32 42 20*	50	86	91	48	165	3,301
G1"1/2	40	4212 40 49 20*	60	96	102	54	180	4,180
G2"	50	4212 50 48 20*	75	109	115	60,5	207	6,360

C	DN	EPDM seal	F	G	H	H1	L	kg
G3/8	10	4212 10 17 30	22	46	54	31	98	0,814
G1/2	15	4212 15 21 30	27	52	60	35	112	1,085
G3/4	20	4212 20 27 30	33	64	70	38	135	1,634
G1"	25	4212 25 34 30	41	69	76	41,5	143	2,024
G1"1/4	32	4212 32 42 30*	50	86	91	48	165	3,301
G1"1/2	40	4212 40 49 30*	60	96	102	54	180	4,180
G2"	50	4212 50 48 30*	75	109	115	60,5	207	6,360

Pilot port : 1/8" BSP parallel  
Complete with M5 silencer

## 4222 double acting, double female, BSP parallel



C	DN	FKM seal	F	G	H	H1	L	kg
G3/8	10	4222 10 17 20	22	46	54	31	98	0,814
G1/2	15	4222 15 21 20	27	52	60	35	112	1,085
G3/4	20	4222 20 27 20	33	64	70	38	135	1,634
G1"	25	4222 25 34 20	41	69	76	41,5	143	2,024
G1"1/4	32	4222 32 42 20*	50	86	91	48	165	3,301
G1"1/2	40	4222 40 49 20*	60	96	102	54	180	4,180
G2"	50	4222 50 48 20*	75	109	115	60,5	207	6,360

C	DN	EPDM seal	F	G	H	H1	L	kg
G3/8	10	4222 10 17 30	22	46	54	31	98	0,814
G1/2	15	4222 15 21 30	27	52	60	35	112	1,085
G3/4	20	4222 20 27 30	33	64	70	38	135	1,634
G1"	25	4222 25 34 30	41	69	76	41,5	143	2,024
G1"1/4	32	4222 32 42 30*	50	86	91	48	165	3,301
G1"1/2	40	4222 40 49 30*	60	96	102	54	180	4,180
G2"	50	4222 50 48 30*	75	109	115	60,5	207	6,360

Pilot port : 1/8" BSP parallel



## HOT WATER WASH DOWN GUNS

Ideal for low pressure cleaning and sanitary applications such as:-

- Food and dairy processing
- Meat and poultry processing and packing
- Pharmaceutical and chemical manufacturing
- Tank and drum cleaning
- Marine and off-shore

These robust, heavy duty items have internals of brass and stainless steel and are supplied complete with hard wearing, scuff resistant blue rubber covers.

The spring loaded trigger mechanism shuts off the flow of water when released, thereby saving water – important in metered areas – and also adjusts the jet pattern from a solid stream to a 50° hollow cone.

The Hot Water Wash Down Guns are suitable for hot or cold water applications.

Some of the other important features of the Hot Water Wash Down Gun include:-

- Easily adjusted water volume
- Variable spray pattern – from a solid stream to a 50° hollow cone
- Rubber coated handle for protection of hands at high water temperatures
- Hose connection as base for easy manoeuvring

Working pressure: 25 Bar max

Water temperature: 80°C max

Delivery rate: 25L/min at 5 Bar

End connection: 1/2" BSP female



Product number: **DINGA**

## WASH DOWN, SPRAY & FARM TANK NOZZLES

Product No.

Description

**SN75**

3/4" insulated water nozzle (for use with hot water to +82°C)



HRN-20P



PJN-40

**HTN-12B**

**HTN-20B**

**HTN-25B**

**PJN-20B**

**PJN-25B**

**HRN-20B**

**HRN-20P**

**HRN-25B**

**HRN-25P**

**PJN-25**

**PJN-40**

1/2" hose tail nozzle – brass

3/4" hose tail nozzle – brass

1" hose tail nozzle – brass

3/4" nozzle – female thread 3/4" BSP

1" nozzle – female thread 1" BSP

3/4" hose reel nozzle – brass

1" hose reel nozzle – poly

3/4" hose reel nozzle – brass

1" hose reel nozzle – poly

1" spray nozzle – poly (power jet)

1.1/2" spray nozzle – poly (power jet)



SN75

**SLUMP**

**FTN-25**

**10A25**

1" Slump Gun – aluminium

1" Farm Tank Nozzle – poly/aluminium

1" Diesel Trigger Nozzle – aluminium



10A25



SLUMP



FTN25

### MODEL 30 GUNJET

#### HEAVY DUTY HIGH PRESSURE

Pressure: 1500 psi (105 bar)

Capacity: 5 gpm (19 l/min)

Temperature:  
200°F (93°C)

The Model 30 GunJet is a heavy-duty impact resistant spray gun with a sturdy Nylon handle and trigger guard. The 30 gun is a high pressure gun which remains responsive and easy to operate even at maximum flow and pressure conditions. The light trigger pull provides positive control. The heat resistant handle remains comfortable even at high temperatures. A special trigger lock feature locks in the "off" position to prevent accidental discharge and retracts flush into the handle when the gun is in use.

Model 30 GunJets operate at pressures up to 1500 psi (105 bar) and provide flow rates up to 5 gpm (19 l/min). Liquid temperatures up to 200°F (93°C) can be handled.

Product No. **SPR-30**



### MODEL 31 GUNJET

#### LIGHT DUTY LOW PRESSURE

Pressure: 500 psi (35 bar)

Capacity:

5 gpm (19 l/min)

The Model 31 GunJet features a durable brass-forged body and a comfortable palm-fitting grip. Instantaneous positive trigger action provides drip-free shut-off. An optional trigger lock is available for continuous spraying. Model 31 GunJets operate at pressures up to 500 psi and provide flow rates up to 5 gpm (19 l/min). Model 31 GunJets off plated steel trigger and steel valve stem. The trigger and steel valve stem packing are made from teflon.

Product No. **SPR-31**



### MODEL 23H GUNJET

#### MEDIUM DUTY LOW-MEDIUM PRESSURE

Pressure: 1000

psi (70 bar)

Capacity: 5

gpm (19 l/min)

Temperature:  
200°F (93°C)

The 23H GunJet spray gun features a strong aluminium alloy handle, comfortable trigger grip, and trigger guard. The sprayed liquid only contacts the inlet body, tip retainer and orifice tip. A stainless steel inlet body and tip retainer are ideal for spraying corrosive liquid. Standard guns offer a nickel-plated brass inlet body and tip retainer, a TEFLON valve seat and a stainless steel stem with brass guide.

Product No. **SPR-23H**



### HP SPRAY GUN

#### HIGH PRESSURE

(Inlet 1/4 BSP) Working Pressure 4060psi  
Max. Temp. 150°C.

Product No.

**SPR-PA3020000**



Wash down adaptors

### ACCESSORIES

#### HIGH PRESSURE SWIVELS

Keeps the hose from twisting. Capable of handling pressures up to 3000psi (207 bar).  
Size: 3/8"

Material: Stainless steel.

Product No. **SPR-15950SS**

Material: Brass

Product No. **SPR-15950**





Proprietary Limited



**ON-SITE INSTALLATION & SERVICE**

**1800 803 222**

**FLUID POWER SERVICE**